

IR Coding Series I: Vascular Basics

August 2021

Jennifer Bash, RHIA, RCCIR, CIRCC, CPC, RCC

Director of Coding Education

Disclaimer

The information presented is based on the experience and interpretation of the presenters. Though all of the information has been carefully researched and checked for accuracy and completeness, ADVOCATE does not accept any responsibility or liability with regard to errors, omissions, misuse or misinterpretation.

CPT codes are trademark and copyright of the American Medical Association.

Agenda

- Introduction to Interventional Radiology
- Anatomy & Terminology
- Vascular Coding Concepts
- Examples
- IR Coding Checklist

Resources

- AMA
- CMS
- ACR
- SIR
- ZHealth



What is Interventional Radiology?

The use of medical imaging to guide minimally invasive surgical procedures to diagnose and treat patients

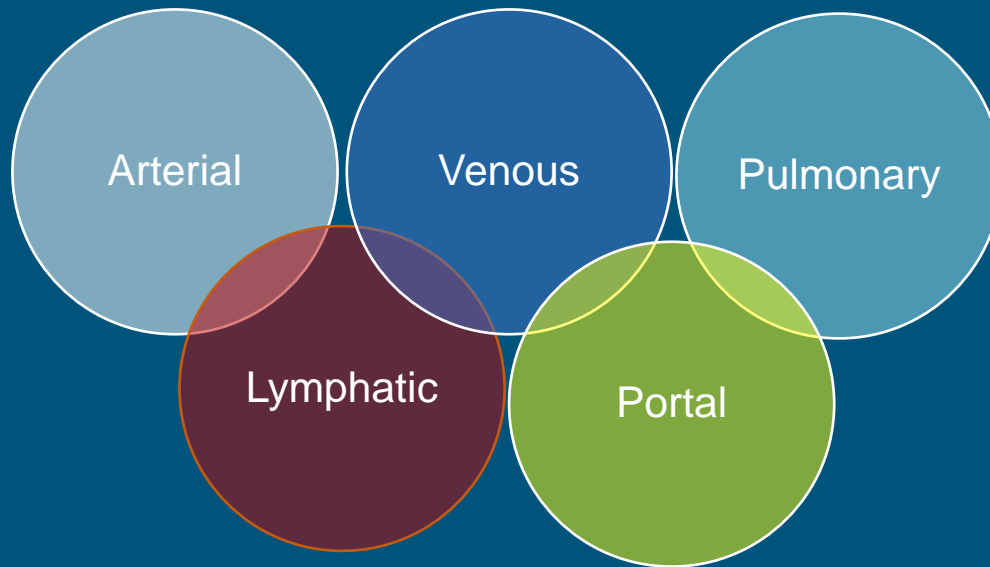


Nonvascular IR vs. Vascular IR

- Nonvascular (“Specials”)
- Vascular
 - Diagnostic Angiography
 - Therapeutic Interventions



5 Vascular Systems



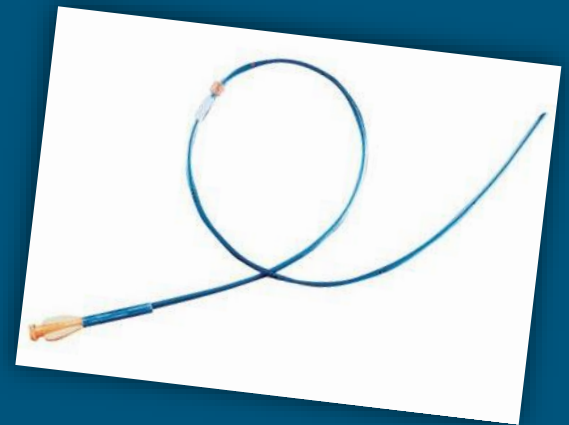
Anatomy-Vascular

- Head & Neck/Cervicocerebral
- Upper Extremity
- Pulmonary
- Portal
- Visceral
- Renal
- Pelvic
- Lower Extremity
- Spinal



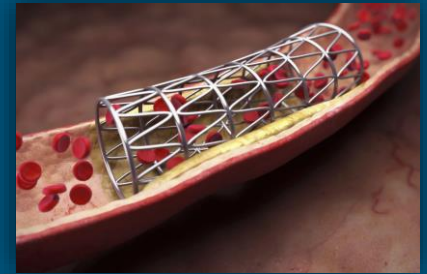
Terminology

- Angio- vessel (artery or vein)
- Angiography -viewing and taking pictures of the vessels with contrast
- Bifurcation- split/division of a vessel into branch(es)
- Catheter - tube
- Contralateral-opposite side
- Ipsilateral-same side
- Transcatheter -via or through the catheter
- Stenosis- narrowing of a vessel
- Thrombus- clot within a vessel



Terminology-Therapeutic Interventions

- Angioplasty- repairing a vessel via balloon inflation
- Stent- repairing a vessel using an artificial tube to create an opening
- Embolization- block flow from within a vessel
- Atherectomy- removal of plaque from within a vessel
- Thrombectomy- removal of clot from within a vessel
- Thrombolysis- break-up or dissolve clot
- Hemodialysis Access-Arteriovenous connection for routine dialysis



Component Vs. Comprehensive Coding

Component Coding

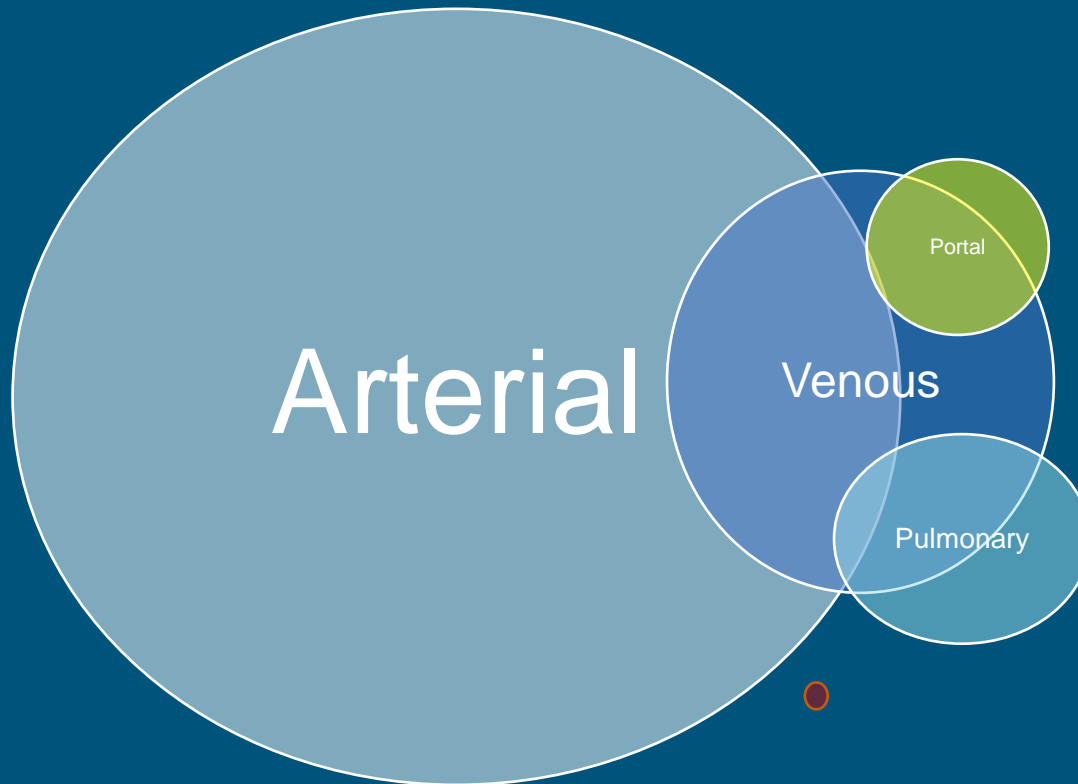
- Surgical code and RS&I codes are billed separately
- Example: Inferior vena cavagram (36010, 75825)

Comprehensive Coding

- One code is used to represent the entire or portion procedure
- Example: Arch aortogram (36221)

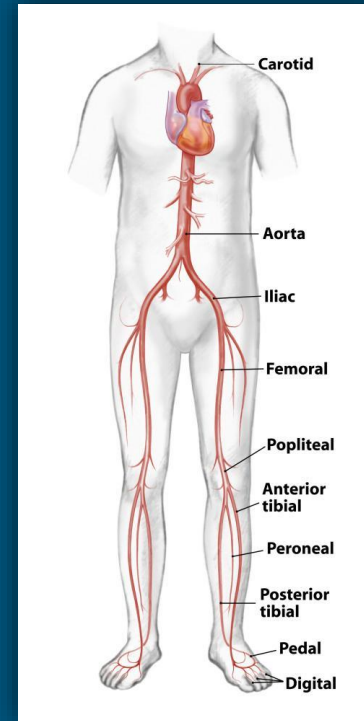
Always check CPT code and parenthetical notes to determine what is included in any given CPT code

5 Vascular Systems



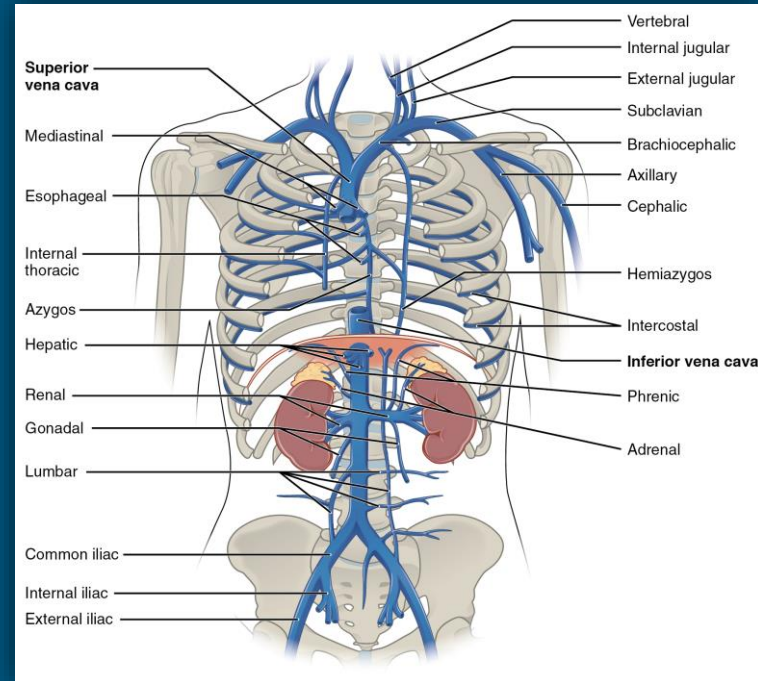
Arterial System

- Main Vessel-Aorta
- Common Access Point:
 - Common femoral artery
- Cath Selection Codes:
 - 36200-Nonselective
 - 36215-36218-Above diaphragm
 - 36245-36248-Below diaphragm
- Imaging Codes
 - Varies depending on body area



Venous System

- Main Vessel-Vena Cava
- Cath Selection Codes:
 - 36005-Nonselective Extremity
 - 36010-Nonselective vena cava
 - 36011-1st order
 - 36012-2nd and beyond
- Imaging Codes:
 - 75825/75827-IVC/SVC
 - 75820/75822-Extremity
 - 75831/75833-Renal



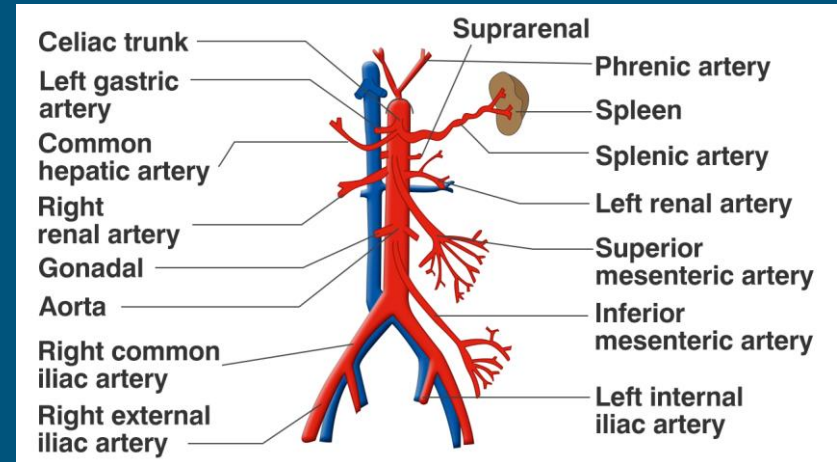
Selective or Non-Selective

- Non-Selective Catheter Placement
 - Placement into vessel entered, aorta, vena cava, or AV fistula ONLY
- Selective Catheter Placement
 - Placement into a branch off the vessel entered, aorta, or vena cava
 - Each advancement off branch/bifurcation=higher selectivity (order) vessel
 - Includes all non-selective placements and lesser order branches selected
- You may not bill for a selective and non-selective at the same session unless there is a separate access.



Order of Selectivity

- From the initial non-selective vessel (e.g. aorta) into a branch is called first order selection
- Each advancement off bifurcation=higher selectivity (order) vessel
- Higher selectivity includes lower selective codes and nonselective code along the way
- Arterial-3rd order and beyond (36215/36245)
- Venous-2nd order and beyond (36012)



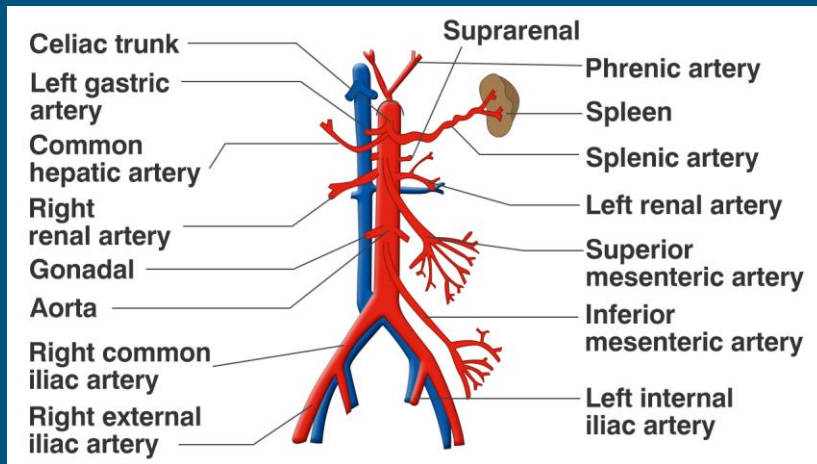
Vascular Family

- A VASCULAR FAMILY is a branch off the vessel entered, aorta, or vena cava

- EXAMPLES:

- Mesenteric arteries (celiac, SMA, IMA)
- Contralateral common iliac
- Main vessels off the aortic arch
- Gonadal vein

- Each vascular family is coded separately
- Code only one 1st, 2nd, or 3rd order vessel per vascular family in the arterial system (highest selectivity)
- Additional branches within same vascular family may warrant an add-on code depending on anatomical site (36218/36248)



Catheter Placement Coding Tips

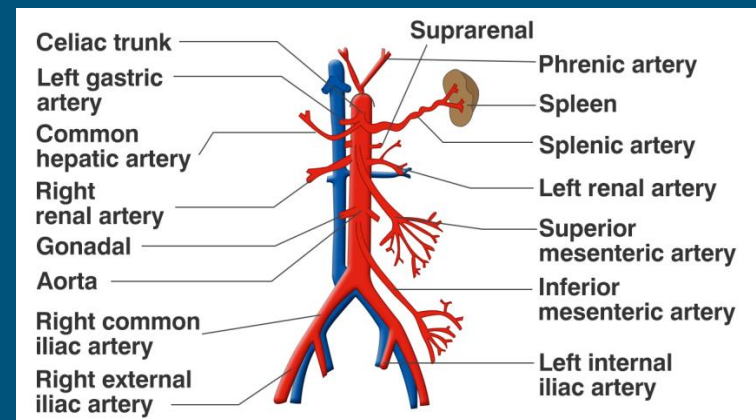
- Code for each vascular SYSTEM separately
- Separate access within the same system may be coded separately
- Code for each vascular family (branch off the main vessel) separately
- Code to the highest level catheter selection within each vascular family
- Once the catheter is placed selectively, drop non-selective code and all selections “on the way”
- Code for any additional selective second order, third order, and beyond within a vascular family
- Always confirm if catheter placement(s) is included another code for the procedure

Angiography Coding Tips

- Imaging component/“RS&I”(Radiology Supervision & Interpretation)
- Angiography coding tips:
 - Determine vessels where contrast was injected
 - Determine which vessels were imaged with a report of findings
 - Determine the intent of the imaging before coding
 - Must be diagnostic and medically necessary
 - “Road mapping”/”Guiding Shots” are not billable
 - Confirmatory/Repeat imaging is not billable
 - Always confirm if imaging is included in the code

Additional Selective Angiography-75774

- DESCRIPTION
 - 75774: Angiography, selective, each additional vessel studied after basic examination, radiological supervision and interpretation (List separately in addition to code for primary procedure)
- SELECTIVE ONLY
- Common utilization-visceral and lower extremity arteries
- Define “basic” examination
- Not to be used in the venous system



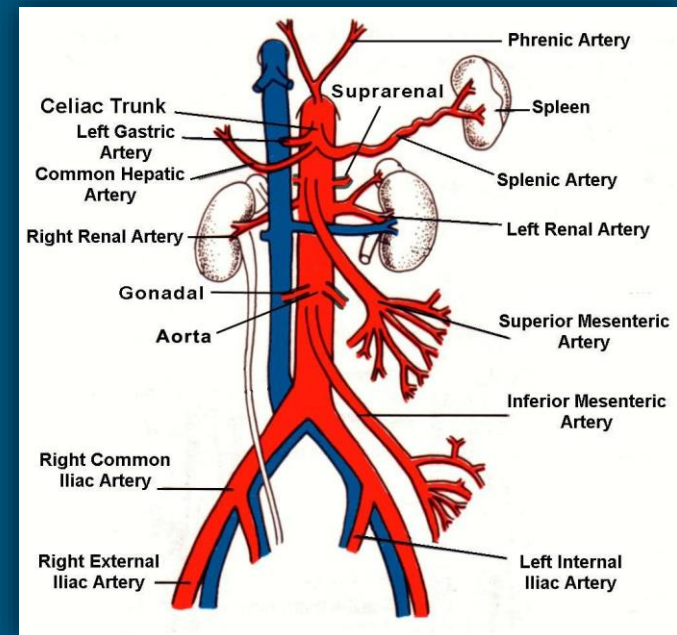
Examples

Venous System-Coding Examples

- Example #1: Catheter placed into the inferior vena cava for IVC gram
- 36010, 75825
- Example #2-Catheter placed into the inferior vena cava for IVC gram and advanced proximally to the SVC for SVC gram
- 36010, 75825, 75827
- Catheter placed into bilateral renal veins (1st order) for selective renal venography
- 36011X2, 75833

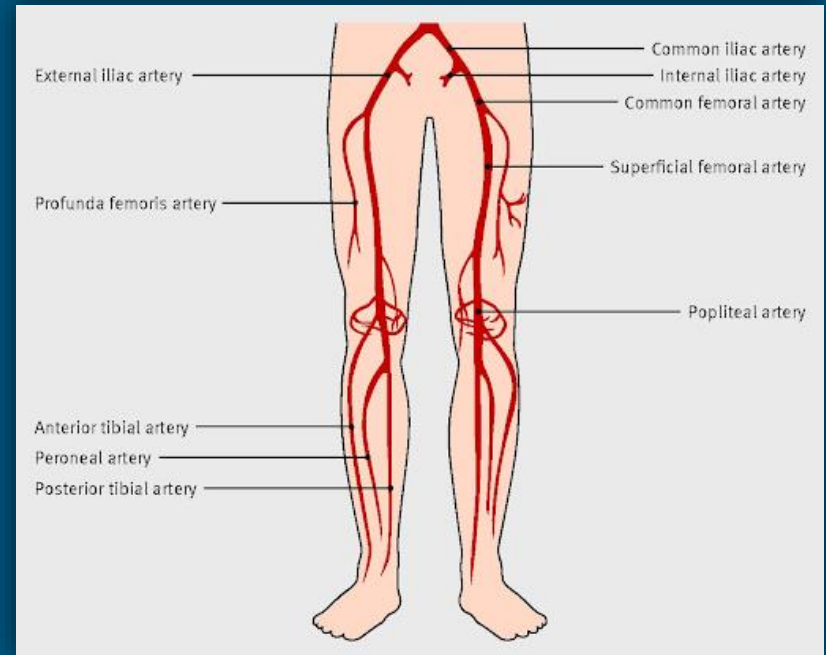
Arterial System-Coding Examples

- Example #1-Catheter placed into the aortic arch with imaging of the arch and great vessels
- 36221
- Example #2-Catheter placed into suprarenal abdominal aorta for abdominal aortogram
- 36200, 75625
- Example #3-Catheter placed into the celiac artery, SMA, and IMA for selective angiography
- 36245X3, 75726X3



Arterial System-Coding Examples

- Example #4-Catheter placed into suprarenal abdominal aorta for abdominal aortogram and then pulled down to aortic bifurcation for runoff of the lower extremities below the level of the knees
- 36200, 75625, 75716
- Example #5-From right access, catheter placed into suprarenal abdominal aorta for abdominal aortogram and then pulled down to aortic bifurcation for runoff of the lower extremities below the level of the knees. Imaging shows disease of the left lower leg distribution so catheter is placed over the bifurcation to the left SFA and into the anterior tibial artery with additional imaging. Imaging shows occlusion of the left anterior tibial artery which will require intervention
- 36247, 75625, 75716, 75774



Vascular IR-Coding Checklist

Key Components

- Access/Approach (laterality)
- Note any Variant Anatomy
- Selected Vessels
 - Do not code for guidewire placement
- Intervention(s) Performed
 - Note any supply/device(s) used
- Contrast Injections/Imaging
 - Do not code for guiding shots, roadmapping, or confirmatory imaging
- Diagnostic Findings

Q&A



Thank you!

Jennifer Bash

jennifer.bash@advocatercm.com